



QUINCY PUBLIC  
SCHOOLS  
SPECIAL EDUCATION  
PATHWAYS



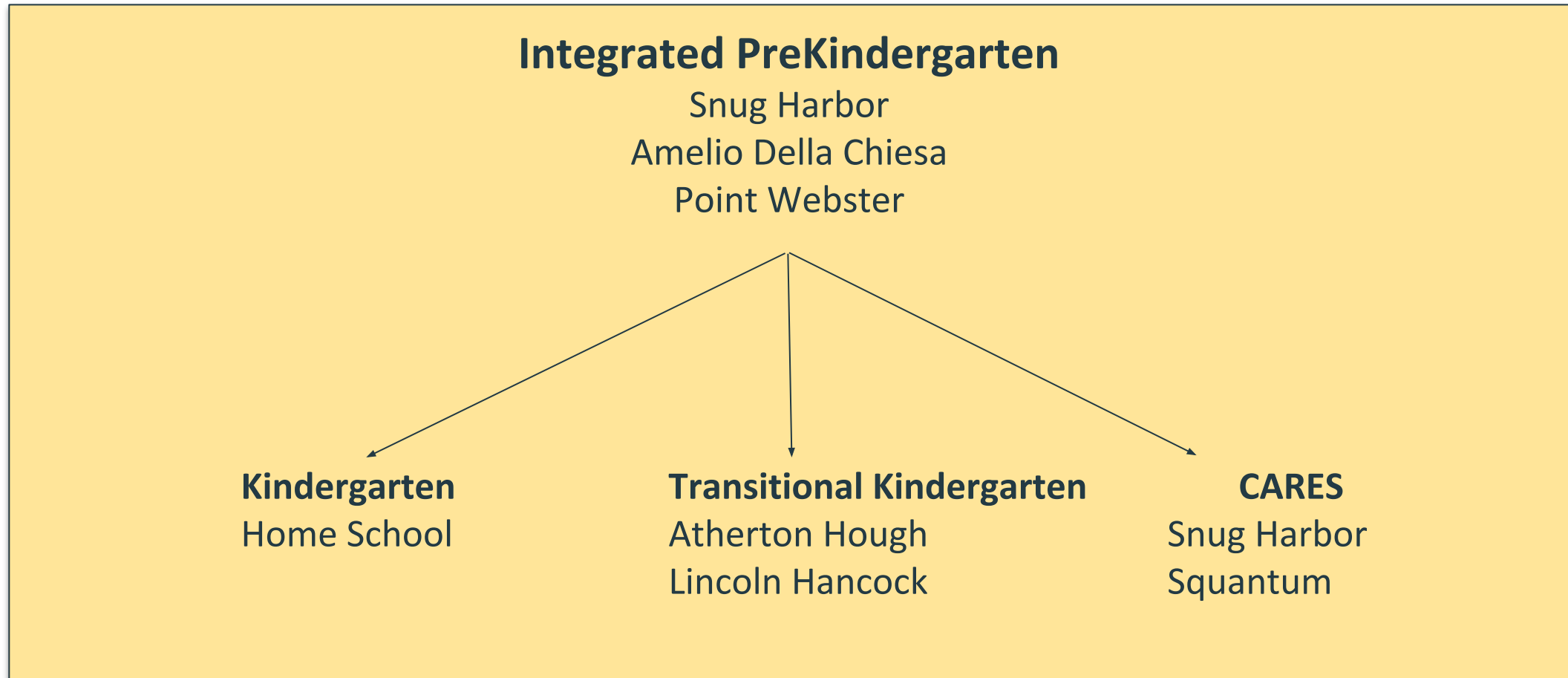
# SPECIAL EDUCATION MISSION

Our mission is to identify students who meet the federal and state criteria as a student with a disability requiring ***specialty designed instruction*** and/or ***related services*** that ***empower*** them to become ***active members*** of society based on their ***individual strengths*** and ***abilities***. We are committed to providing a ***caring community*** of dedicated staff and involved parents that meets the diverse academic, emotional, and social needs of all our students in a ***respectful*** and ***positive environment***.

# Integrated PreKindergarten

- To identify students as early as possible for potential need of special education services
- To maximize exposure to language
- To foster social, emotional, physical and academic skills

# Integrated PreKindergarten Pathway



# Integrated PreKindergarten

## In-Person Instruction

- Snug Harbor
  - 3 teachers, 77 students
- Amelio Della Chiesa
  - 3 teachers, 62 students
- Point Webster
  - 1 teacher, 22 students

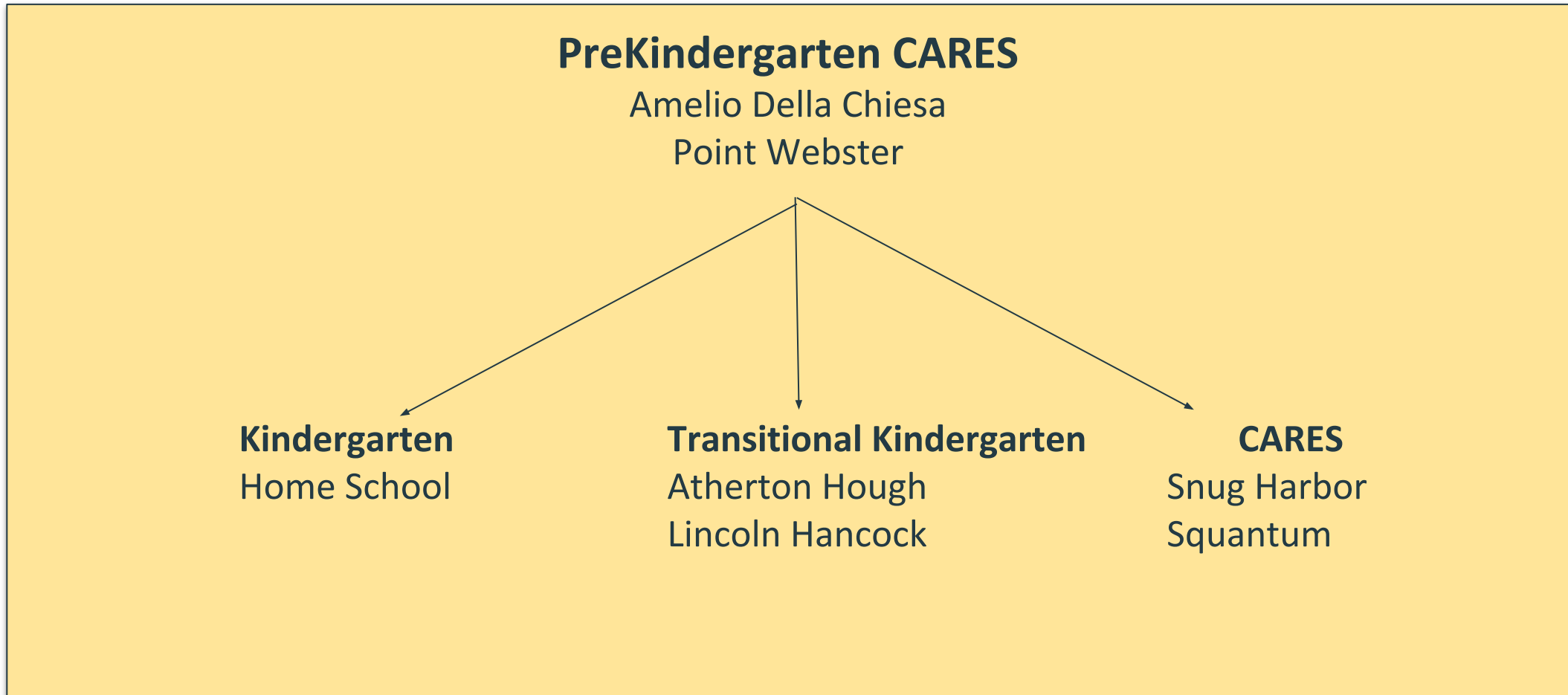
## Remote Instruction

- Citywide
  - 4 teachers, 120 students

# Children Achieve Real Educational Success (CARES)

- PreK-12 program for students diagnosed with Autism Spectrum Disorders
- Highly structured - based on ABA (Applied Behavioral Analysis) principles
- Individual/small group instruction focused on communication/social pragmatics
- Individualized behavioral/therapeutic interventions integrated into classroom
- Related Services are provided both programmatically and individually
- Integrated into the general education setting for both academic and social modeling
- Students participate in the MCAS-Alt grades 3-10
- During High School years community based instruction begins

# PreKindergarten CARES Pathway



# CARES Pathway

## Elementary CARES

Snug Harbor  
Squantum



## Middle School CARES

Southwest



## High School CARES

North Quincy High School



# PreKindergarten CARES

## In-Person Instruction

- Amelio Della Chiesa
  - 7 classes, 46 students
- Point Webster
  - 1 class, 8 students

## Remote Instruction

- Citywide
  - 3 classes, 22 students

# Elementary CARES

## In- Person Instruction

- Snug Harbor
  - 5 classes, 43 students
- Squantum
  - 1 class, 8 students

## Remote Instruction

- Snug Harbor
  - 3 classes, 32 students
- Squantum
  - 2 classes, 20 students

# Middle School CARES

## In-Person Instruction

- Southwest
  - 1 class, 12 students

## Remote Instruction

- Southwest
  - 1 class, 11 students

# Learning Center (LC)

- Designed for students with intellectual or developmental delays
- Students participate in the MCAS-Alt grades 3-10
- Individual or small group instruction focused on functional academics, life skills, recreation/leisure
- Language based and multi-sensory approach
- Related services are provided through push in and pull out model (also music, adaptive PE)
- Inclusion and mainstreaming opportunities foster social skills
- During the high school years vocational and community based instruction begins

# Learning Center Pathway

## **PreKindergarten Learning Center**

Amelio Della Chiesa



## **Elementary Learning Center**

Squantum



## **Middle School Learning Center**

Southwest



## **High School Learning Center**

North Quincy High School

# Elementary LC

## In-Person Instruction

- Squantum
  - 2 class, 15 students

## Remote Instruction

- Squantum
  - 1 class, 12 students

# Middle School LC

## In-Person Instruction

- Southwest
  - 1 class, 11 students

## Remote Instruction

- Southwest
  - 1 class, 10 students

# High School CARES/LC

## In-Person Instruction

- North Quincy
  - 2 classes, 16 students

## Remote Instruction

- North Quincy
  - 1 class, 15 students



# Language Development Class (LDC)

- Designed for students who present with a Language-based learning disability and may also demonstrate weaknesses in receptive and/or expressive language
- Students participate in MCAS
- Intensive language-based environment emphasizing best practices that include visual, auditory and kinesthetic, tactile techniques to improve vocab development, reading comp and written expression
- Diagnostic/prescriptive teaching using Orton Gillingham and phonetic based instruction
- Carryover of decoding techniques and language based practices across all disciplines
- Speech and Language consultation and direct services provided
- Ongoing Professional Development for staff by Landmark School

# LDC Pathway

## Transitional Kindergarten

Atherton Hough  
Lincoln Hancock

## General Education

Home School

## Elementary LDC

Atherton Hough  
Snug Harbor

## Middle School LDC

Broad Meadows  
Southwest

## High School

Quincy High School - PACE (Personalized Academic Career Exploration Grades 9-10)

# Elementary School LDC

## In-Person Instruction

- Snug Harbor
  - 1 class, 10 students
  
- Atherton Hough
  - 6 classes, 64 students

## Remote Instruction

- Citywide
  - 3 classes, 32 students

# Middle School LDC

## In-Person Instruction

- Broad Meadows
  - 5 teachers, 21 students
  
- Southwest
  - 1 class, 11 students

## Remote Instruction

- Citywide
  - 5 teachers, 22 students

# Grades 9-10 PACE

## In-Person Instruction

- Quincy High
  - Content-specific teachers, 8 students

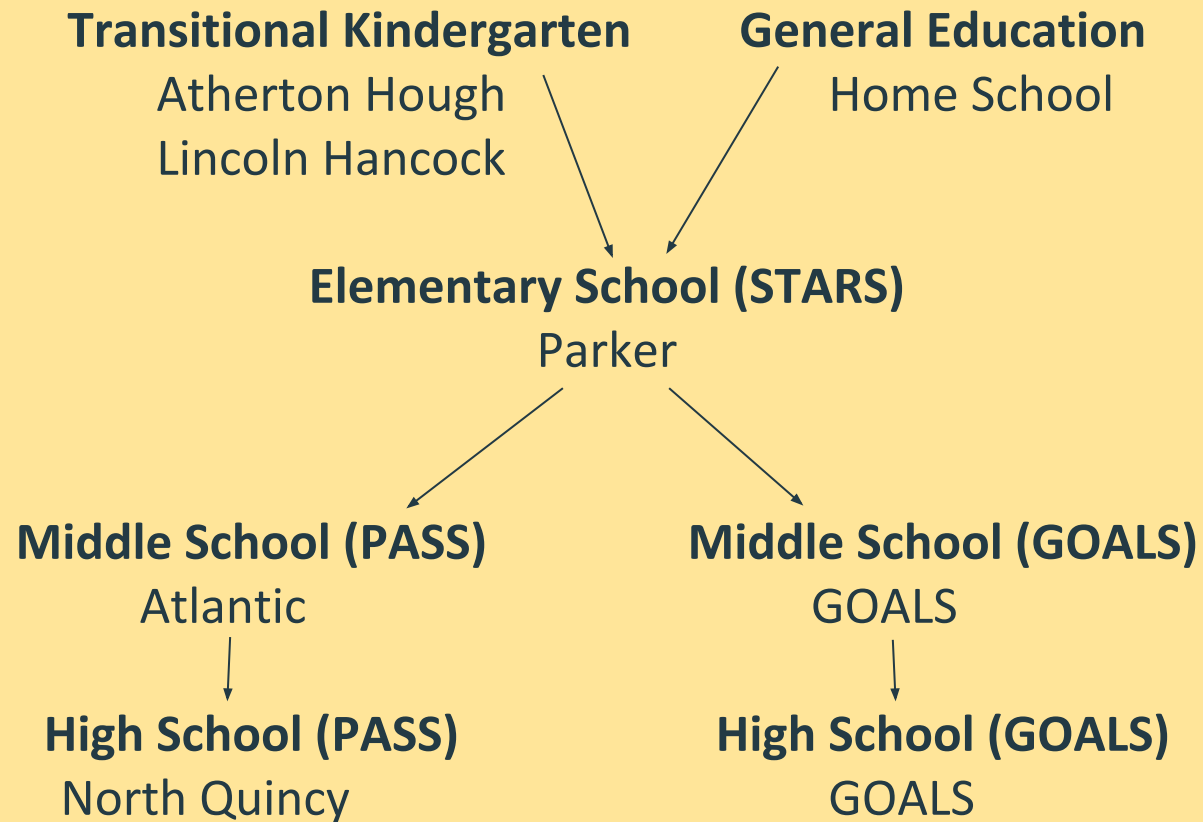
## Remote Instruction

- Quincy High
  - 3 students

# Social/Emotional Support Programs

- STARS - Students Together Achieve Real Success K-5
- GOALS - Gain Opportunities Acquire Learning Skills 6-12
- PASS - Positive Academic and Social Success 6-12
  
- Individual or small group instruction in a highly structured therapeutic environment
- Group or individual counseling to develop coping skills and self regulation strategies
  
- Collaboration with outside agencies
  
- Inclusion opportunities as appropriate for the individual student's needs and based on a student's IEP

# Social/Emotional Support Programs



# Elementary STARS

## In-Person Instruction

- Parker
  - 2 classes, 13 students

## Remote Instruction

- Parker
  - 1 class, 7 students



# Middle School Social/Emotional Support

## In-Person Instruction

- Atlantic PASS
  - 1 teacher, 1 counselor,  
12 students

## Remote Instruction

- Atlantic PASS
  - 2 students

# High School Social/Emotional Support

## In-Person Instruction

- North Quincy High PASS
  - 4 teachers, 2 counselors, 35 students
- GOALS
  - 4 teachers, 24 students

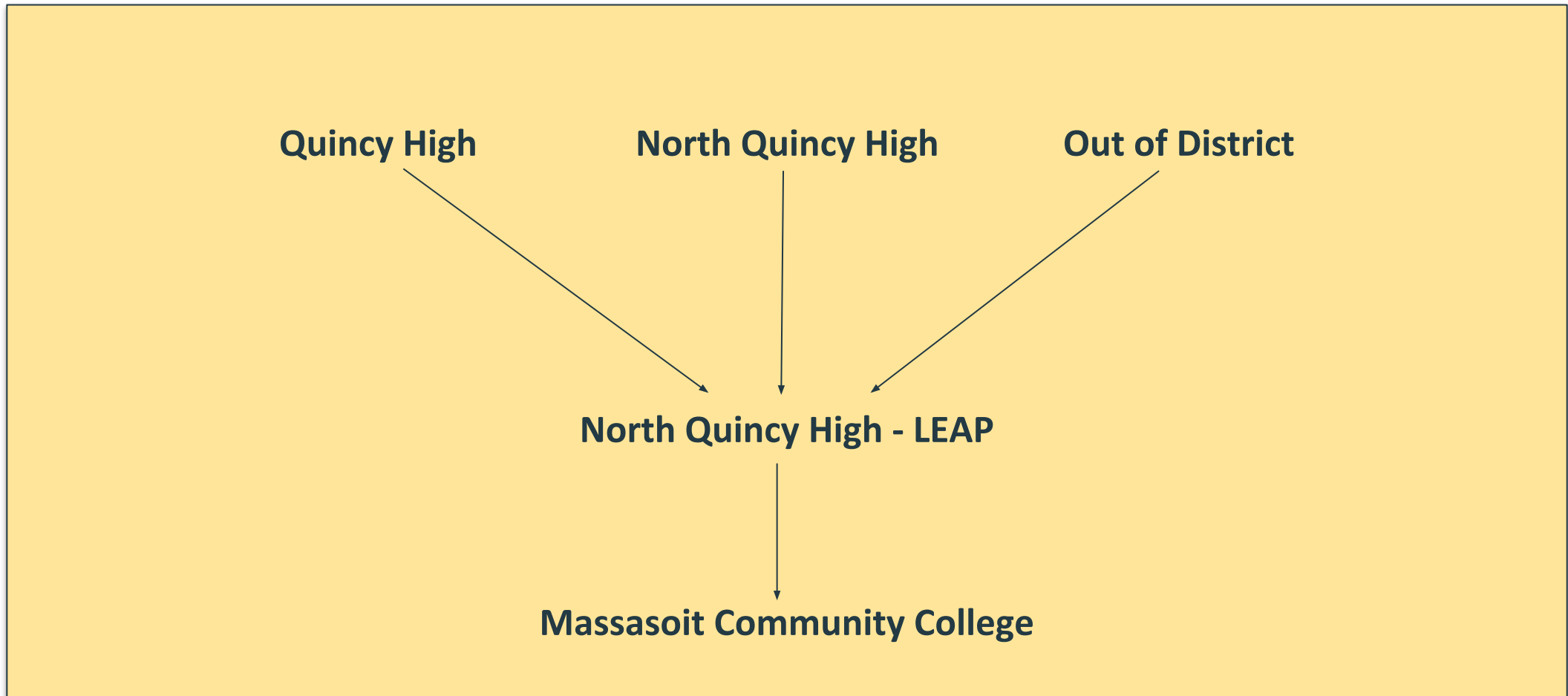
## Remote Instruction

- North Quincy High PASS
  - 5 students
- GOALS
  - 3 students

# Learn, Explore, Achieve, Plan (LEAP)

- Designed for students with intellectual disabilities aged 18-22 who have graduated from high school and want to continue their post-secondary education.
- The program will emphasize community based instruction and community work experience with a focus on the development of the following skills:
  - Self-determination/self-advocacy
  - Social Skills
  - Independent living
  - Financial literacy
- Business partners, travel mobility training, community and agency links, recreation and leisure, daily living skills, vocational training, supported/competitive employment

# LEAP



# LEAP

## In-Person Instruction

- North Quincy High
  - 1 teacher, 2 job coaches, 10 students

## Remote Instruction

- Massasoit Community College
  - 1 ed coach, 4 students

# OUT OF DISTRICT SPECIAL EDUCATION PLACEMENTS 2020 -2021

Educational Disability Category	November 2020	School Names
Emotional	33	Anchor Academy, Compass, South Shore Collaborative, Granite Academy, Italian Home, Manville, (JRI) Meadowridge, Reads Collaborative, Seaport Academy, Walker School
Communication	5	Learning Skills Academy, Willow Hill School, South Shore Collaborative
Health	11	Anchor Academy, Granite Academy, Landmark School, North River Collaborative, South Shore Collaborative
Developmental Delay	8	Learning Prep, Walker School, South Shore Collaborative
Learning Disability	17	Compass, (JRI) Glenhaven, Landmark School, North River Collaborative, South Shore Collaborative
Autism	56	Accept Collaborative, Boston Higashi, Cardinal Cushing, Clearway, Evergreen Center, Ivy Street (MAB), Judge Rotenberg Center, League School, May Center, Nashoba Learning Group, New England Center, Reads Collaborative, Wolf School, South Shore Collaborative
Multiple	15	Kennedy Day School, King Phillip Middle School (BICO), Latham Center, Pilgrim Area Collaborative, Seven Hills, South Shore Collaborative
Intellectual	7	Cardinal Cushing, South Shore Collaborative
Sensory	5	Clarke School East, Learning Center for the Deaf, Perkins School for the Blind
Neurological	4	Anchor Academy, Beverly School, Learning Prep, South Shore Collaborative
Physical	0	
<b>TOTAL</b>	161	

THE QUINCY PUBLIC SCHOOLS SPECIAL EDUCATION TEAM HAS THE PRIVILEGE OF HELPING STUDENTS WITH UNIQUE ABILITIES, STRENGTHS AND ACHIEVEMENT LEVELS TO REACH THEIR FULLEST ACADEMIC POTENTIAL. AS A DEPARTMENT WE ARE COMMITTED TO OUR FOCUS ON MONITORING THE PROGRESS OF ALL OF OUR STUDENTS SO THAT WE MAY INTERVENE AS EARLY AS POSSIBLE. WE ARE CONSTANTLY STRIVING TO IMPROVE UPON OUR PATHWAYS AND PRACTICES, IN COLLABORATION WITH THE FAMILIES WE SERVE, TO PROVIDE THE BEST POSSIBLE SERVICES FOR ALL OF OUR STUDENTS.

**THANK YOU!**